

Datasheet for #sb750 DN

Recommendations:

Please read the starter kit user manual (at least installation chapter 5), if available, and have a look at the FAQ at <http://www.alpeslasers.ch/alfaq.pdf>

WARNING: Operating the laser with longer pulses, shorter period, or higher voltage or current than specified in this document may cause damage and will result in loss of warranty, unless agreed upon with Alpes Lasers!

WARNING: Beware of the polarity of the laser. This laser has to be powered with negative bias on the laser contact (= bonding pad, corresponding to the label "laser" on the LLH) and the positive bias on the base contact (= submount, corresponding to the label "base" on the LLH).

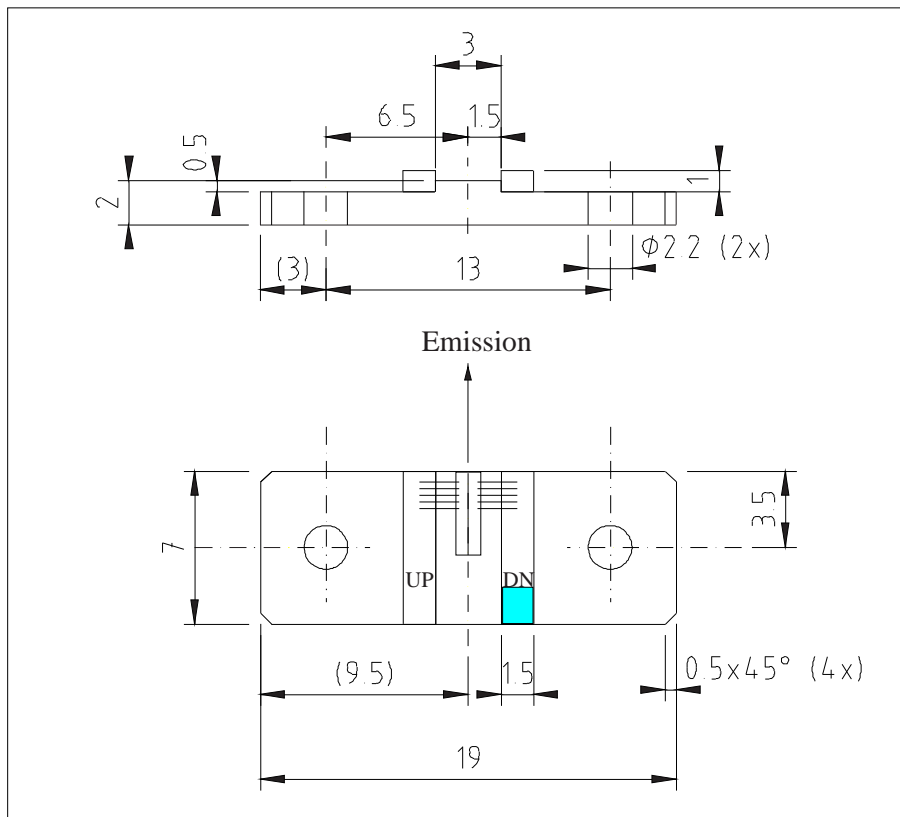


Figure 1: Support mounting for #sb750 DN (please note that the laser is connected to the DN pad drawn in blue)

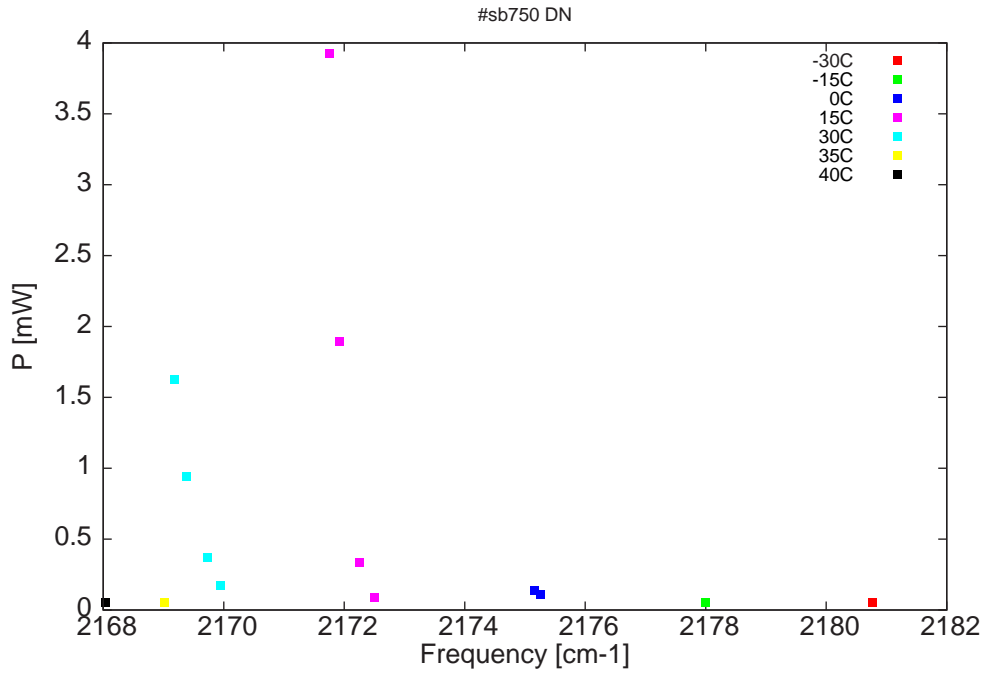


Figure 2: Output power as a function of the singlemode emission frequencies and temperatures

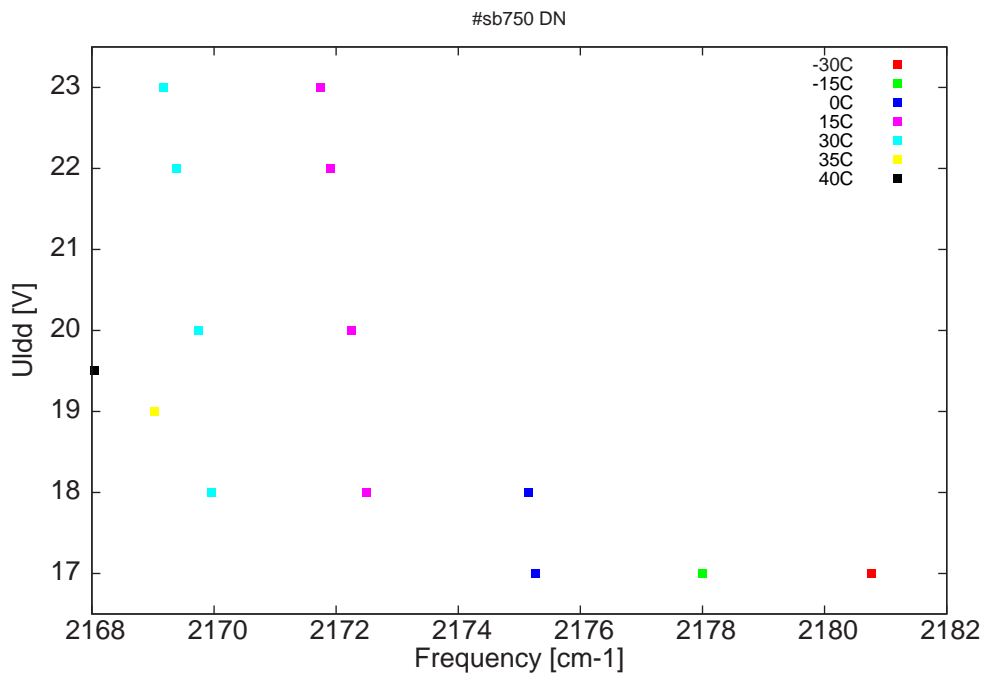


Figure 3: DC voltage fed to LDD (U_{ldd}) as a function of the singlemode emission frequencies and temperatures

λ [nm]	ν [cm ⁻¹]	P[mW]	Temp[°C]	U_{LDD} [V]	I_{pulse} [A]
4585.5	2180.8	0.1	-30	17	0.41
4591.4	2178	0.1	-15	17	0.48
4597.1	2175.3	0.1	0	17	0.54
4597.4	2175.2	0.1	0	18	0.67
4603	2172.5	0.1	15	18	0.68
4603.5	2172.3	0.3	15	20	0.97
4604.2	2171.9	1.9	15	22	1.33
4604.6	2171.8	3.9	15	23	1.51
4608.4	2170	0.2	30	18	0.74
4608.9	2169.7	0.4	30	20	1.03
4609.6	2169.4	0.9	30	22	1.39
4610	2169.2	1.6	30	23	1.55
4610.4	2169	0.1	35	19	0.87
4612.5	2168	0.1	40	19.5	0.94

Table 1 : singlemode optical output power as function of operating parameters

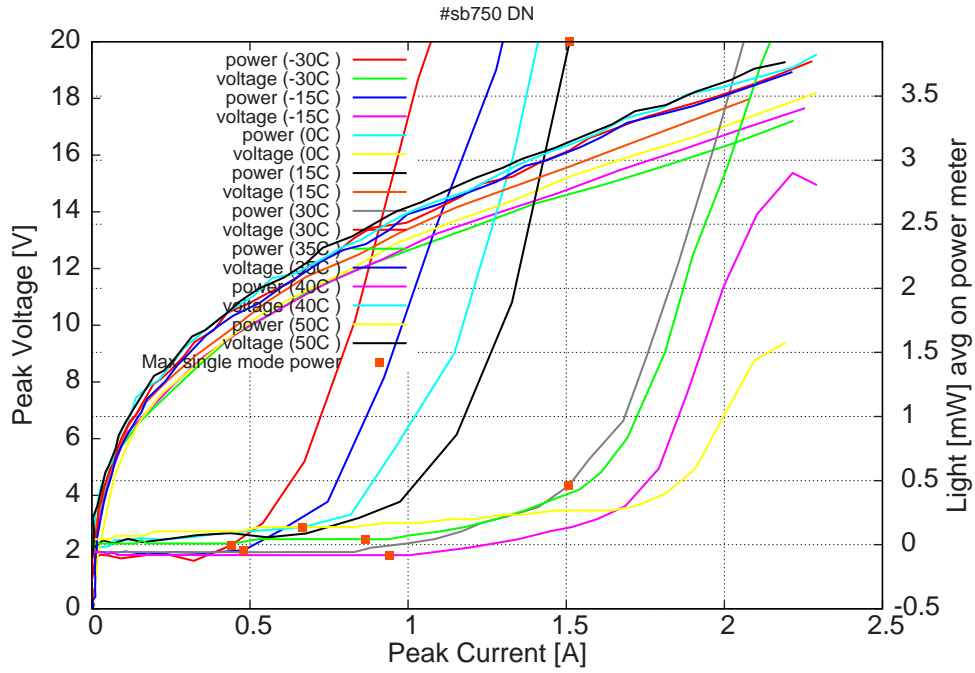


Figure 4: peak voltage and average power vs peak current at 2% duty-cycle (50ns pulses on the laser, 2.5 μ s period) (the solid squares indicate the maximum singlemode emitted power)

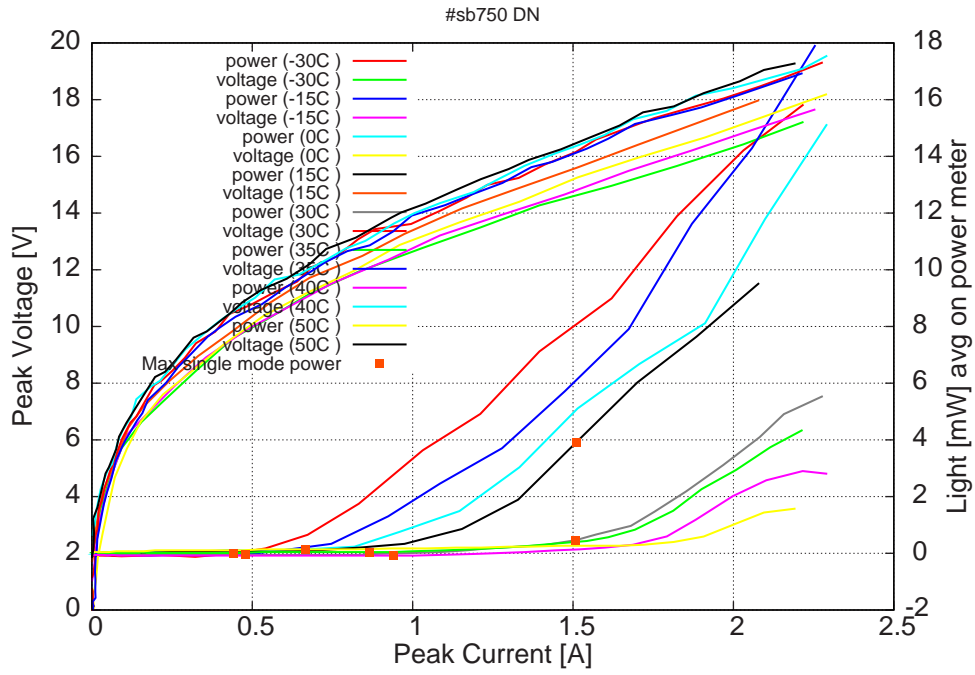


Figure 5: peak voltage and average power vs peak current at 2% duty-cycle (50ns pulses on the laser, $2.5\mu\text{s}$ period) (including the multimode region)

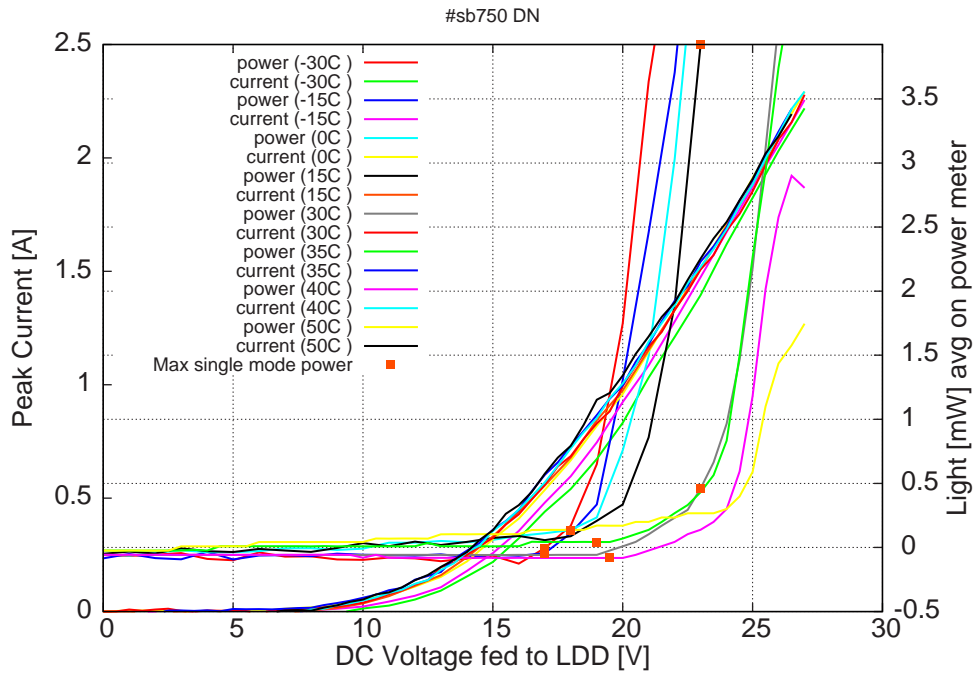


Figure 6: peak current and average power vs LDD voltage at 2% duty-cycle (50ns pulses on the laser, $2.5\mu\text{s}$ period) (the solid squares indicate the maximum singlemode emitted power)

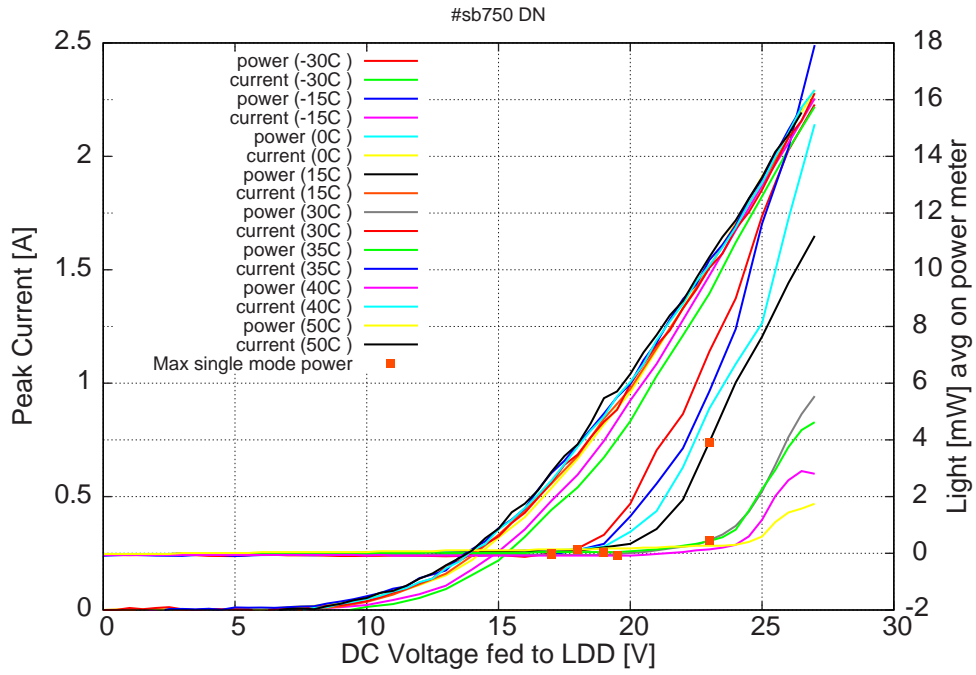


Figure 7: peak current and average power vs LDD voltage at 2% duty-cycle (50ns pulses on the laser, $2.5\mu\text{s}$ period) (including the multimode region)

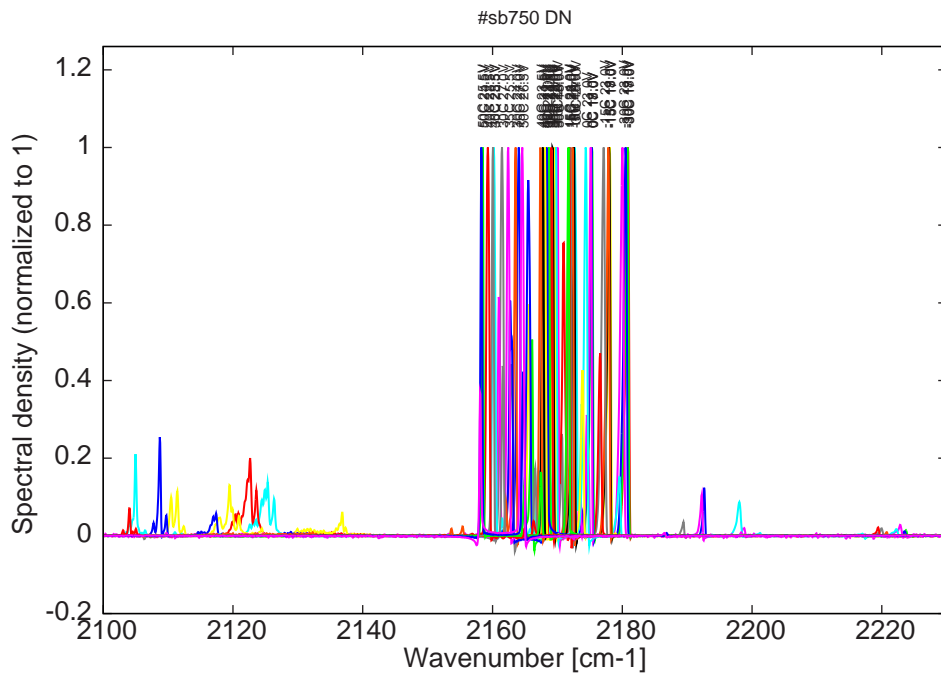


Figure 8: spectra at -30C, -15C, 0C, 15C and 30C at 2% dc for various LDD voltages

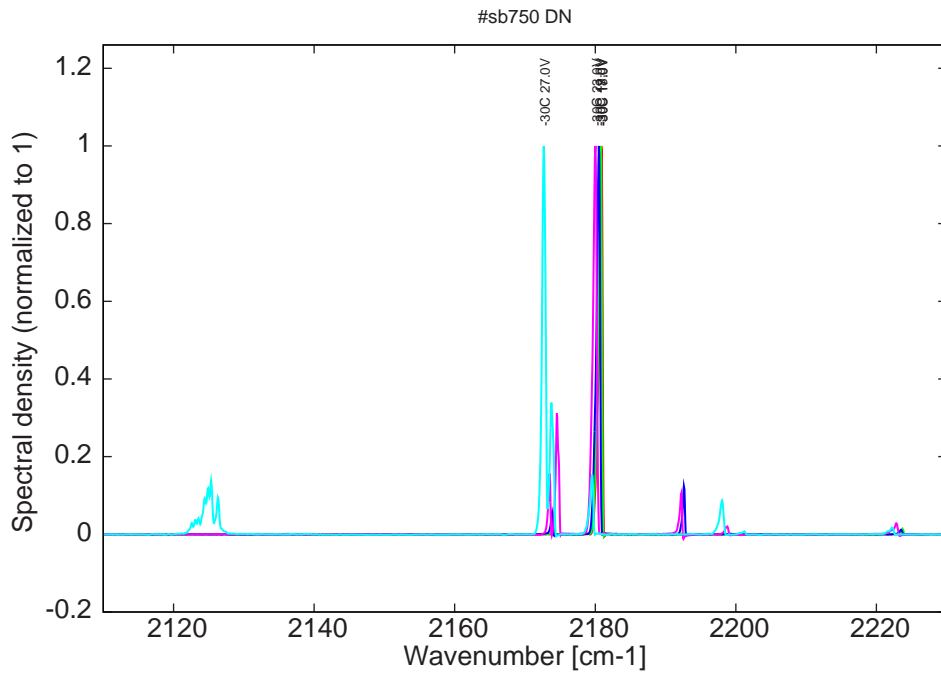


Figure 9: spectra at -30C for various LDD voltages (monomode just at threshold)

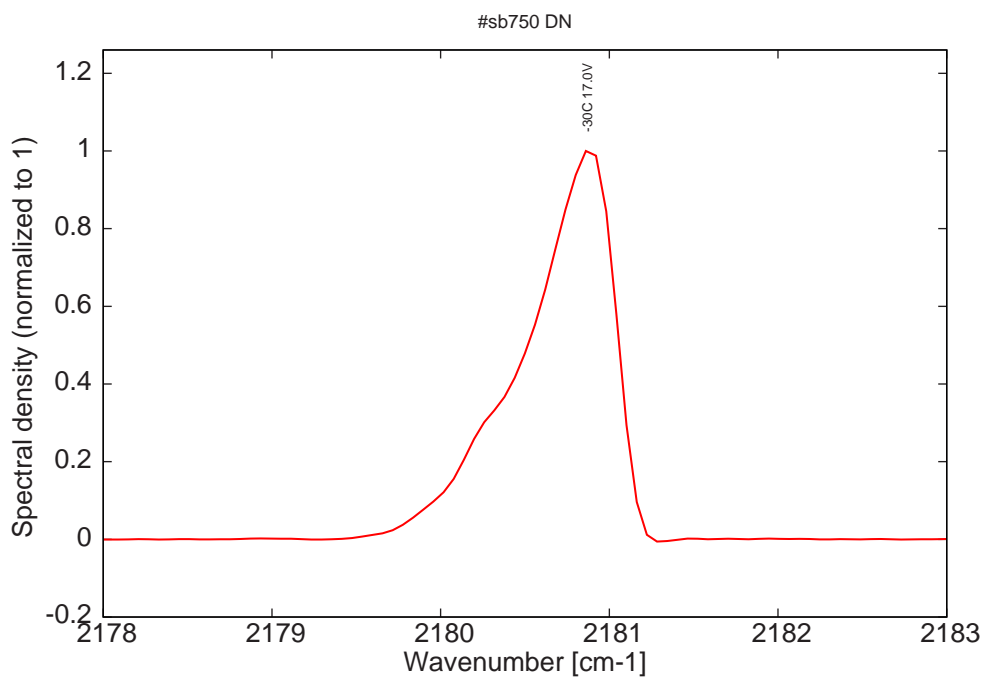


Figure 10: monomode spectrum at -30C and 17V on LDD

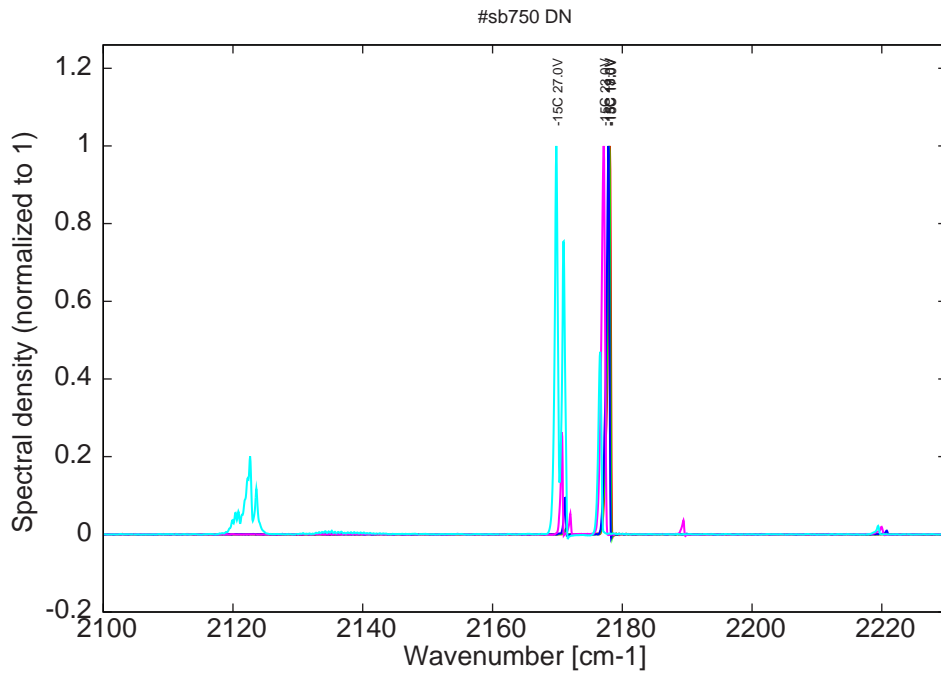


Figure 11: spectra at -15C for various LDD voltages (monomode just at threshold)

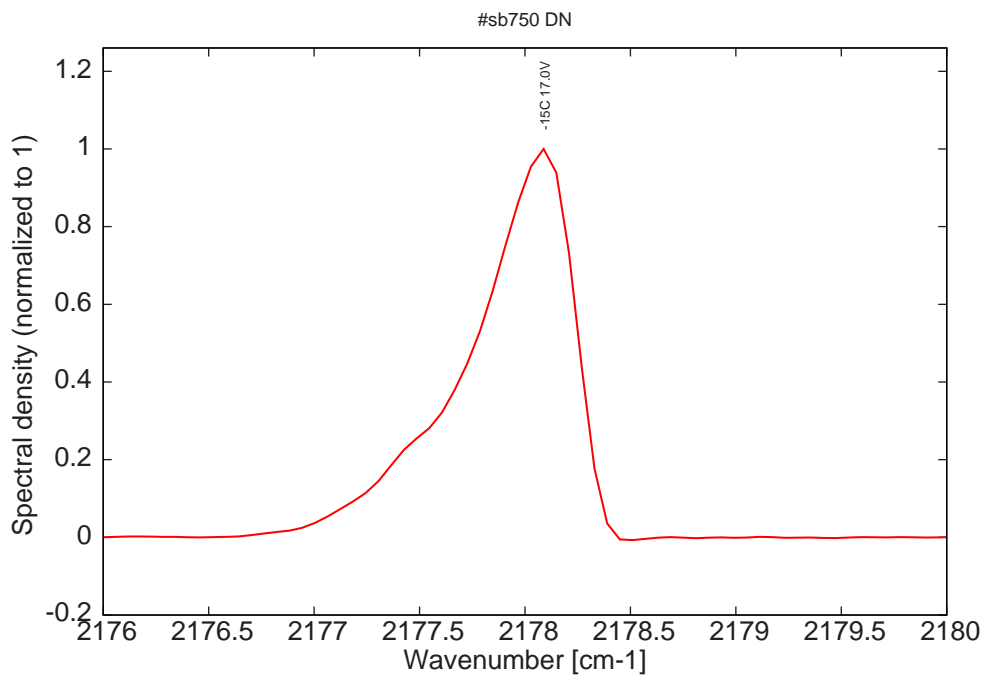


Figure 12: monomode spectrum at -15C and 17V on LDD

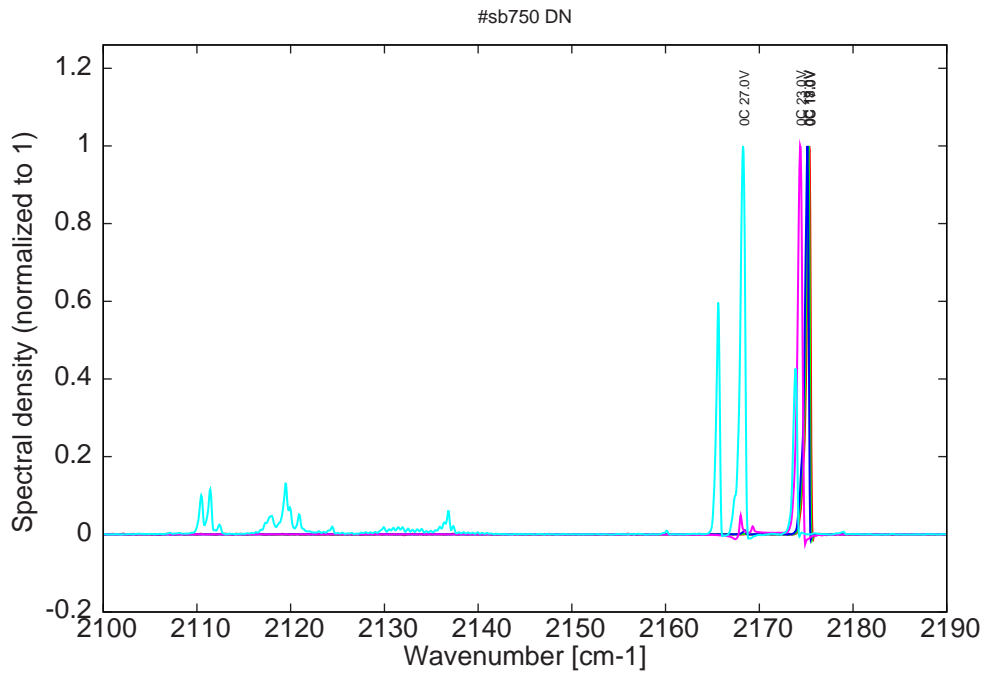


Figure 13: spectra at 0C for various LDD voltages (monomode up to 18V on LDD)

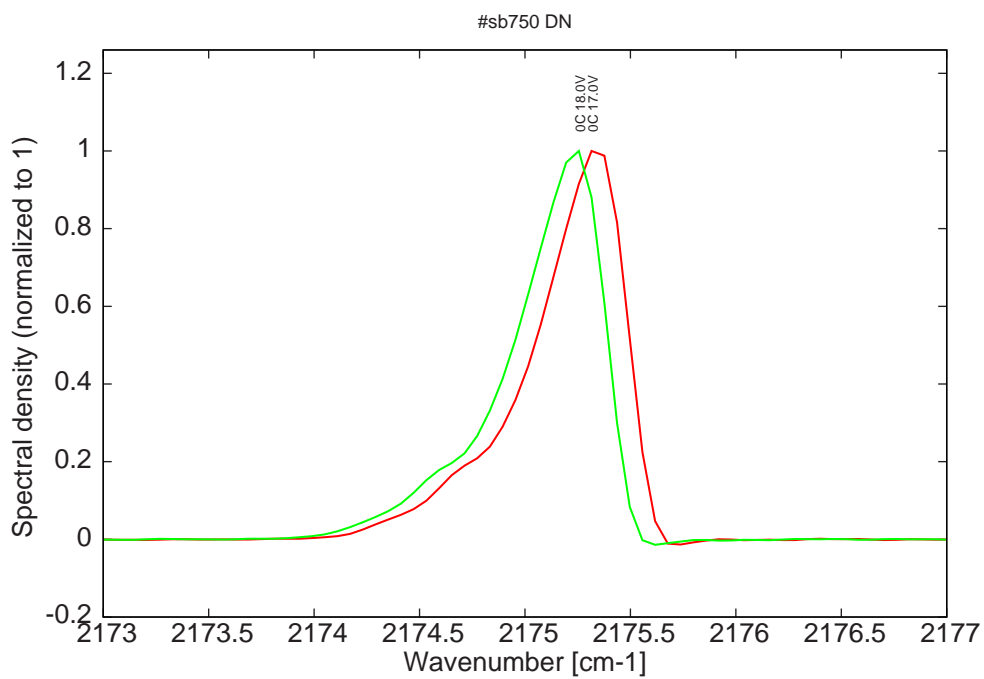


Figure 14: spectra at 0C for various LDD voltages (monomode range)

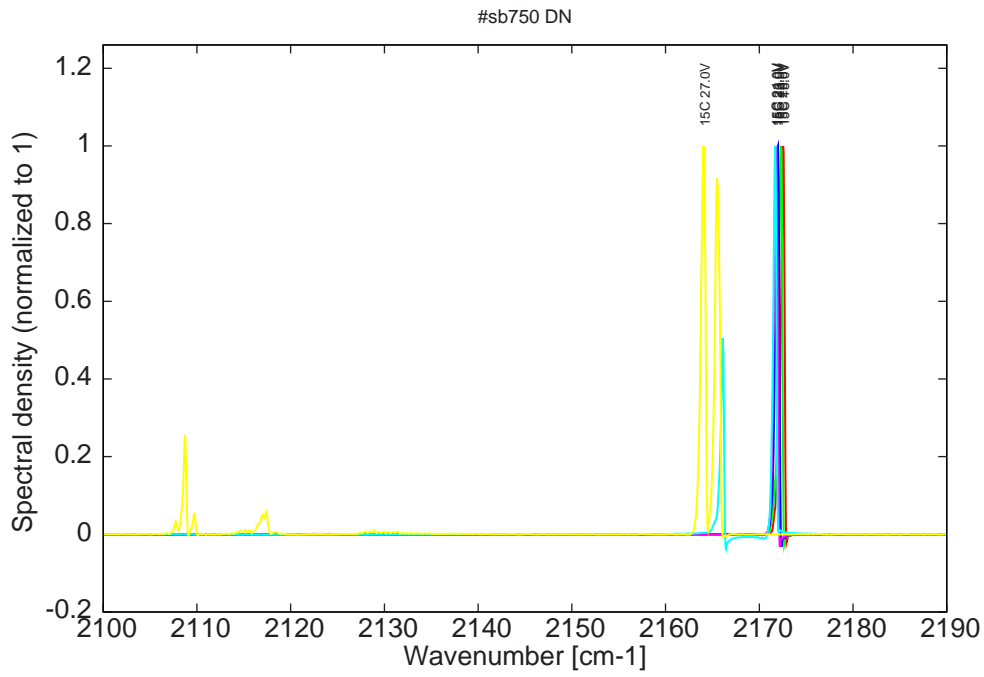


Figure 15: spectra at 15C for various LDD voltages (monomode up to 23V on LDD)

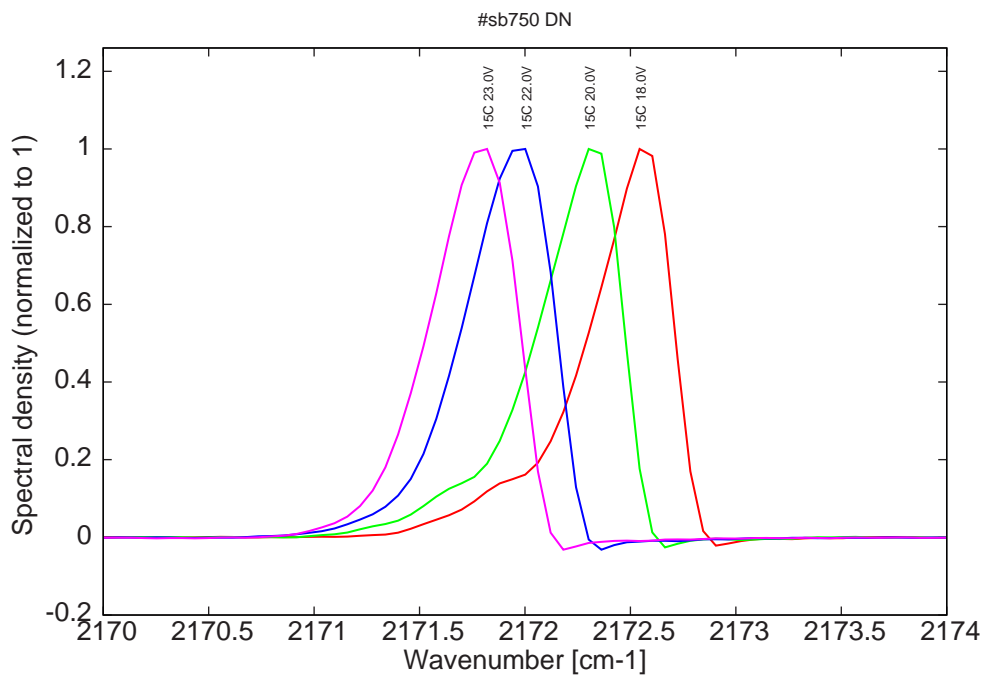


Figure 16: spectra at 15C for various LDD voltages (monomode range)

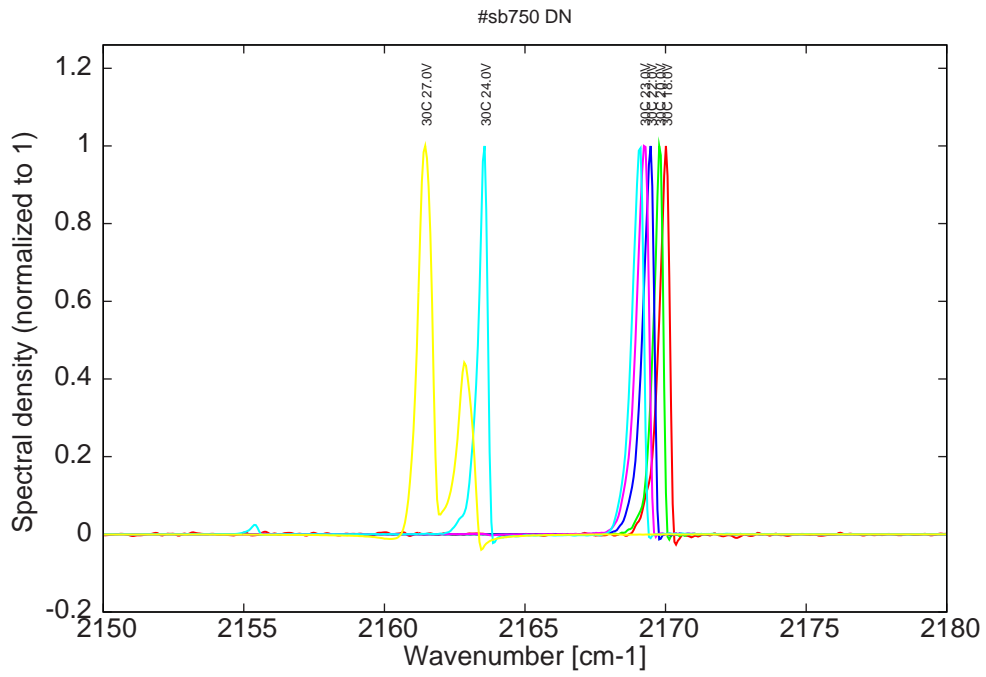


Figure 17: spectra at 30C for various LDD voltages (monomode up to 23V on LDD)

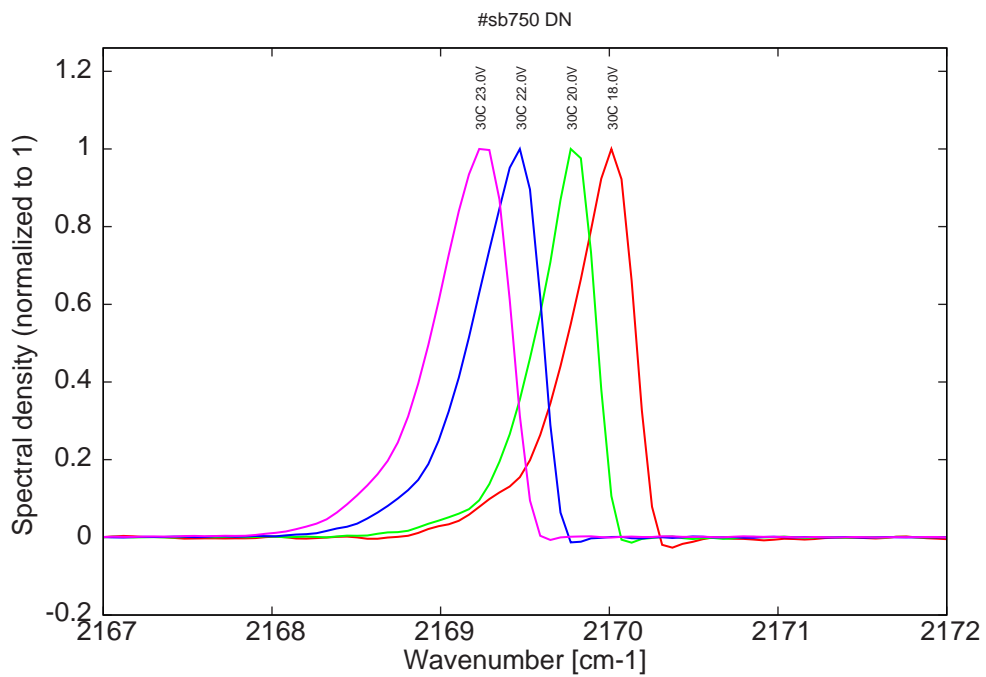


Figure 18: spectra at 30C for various LDD voltages (monomode range)

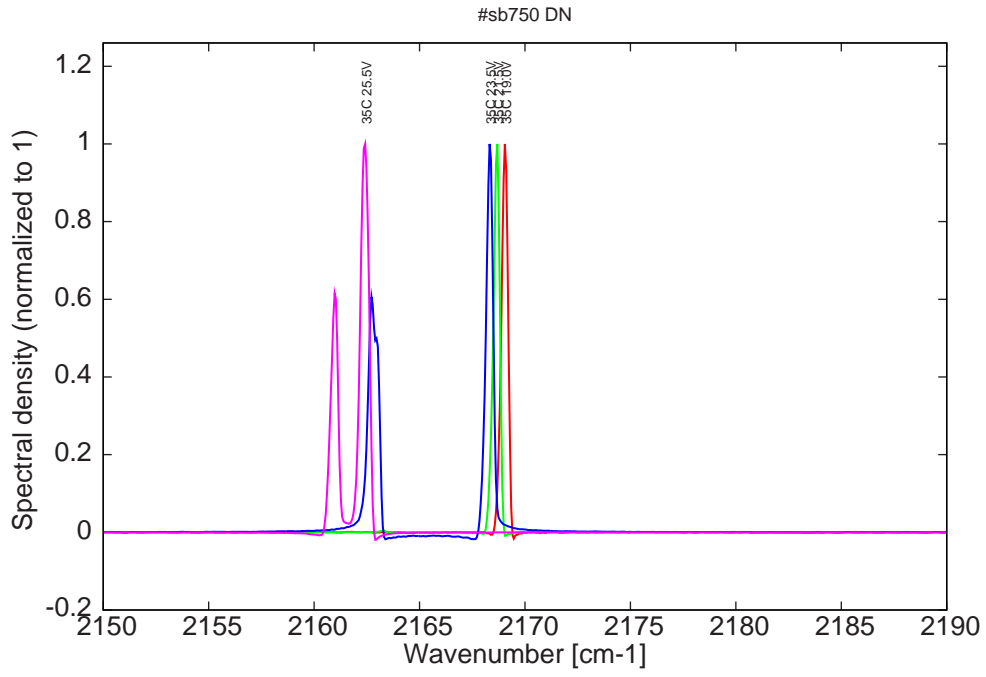


Figure 19: spectra at 35C for various LDD voltages (monomode just at threshold)

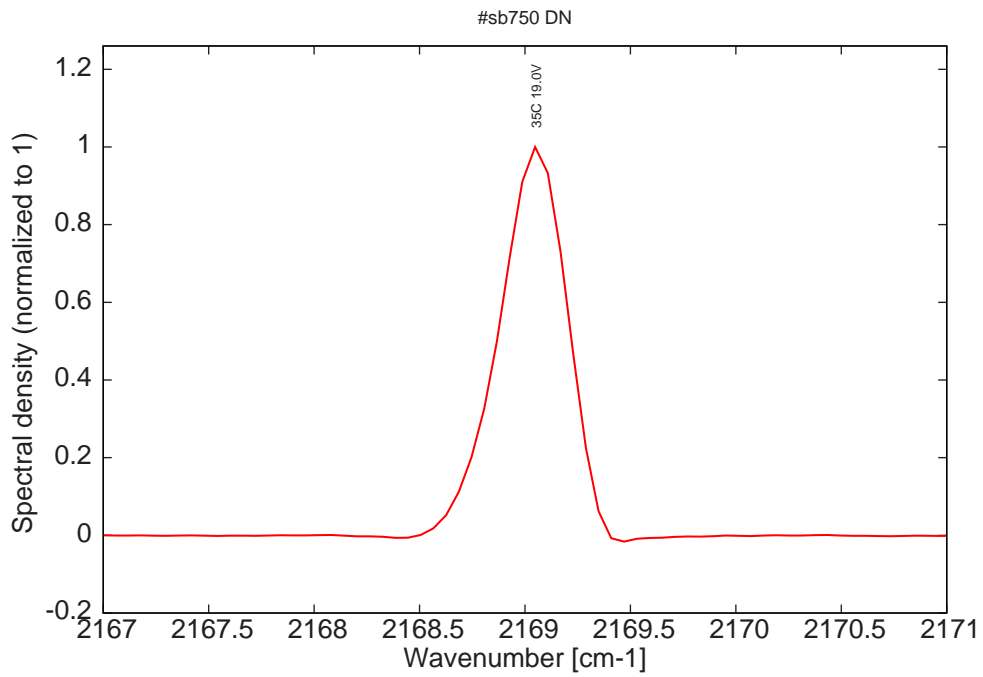


Figure 20: monomode spectrum at 35C and 19V on LDD

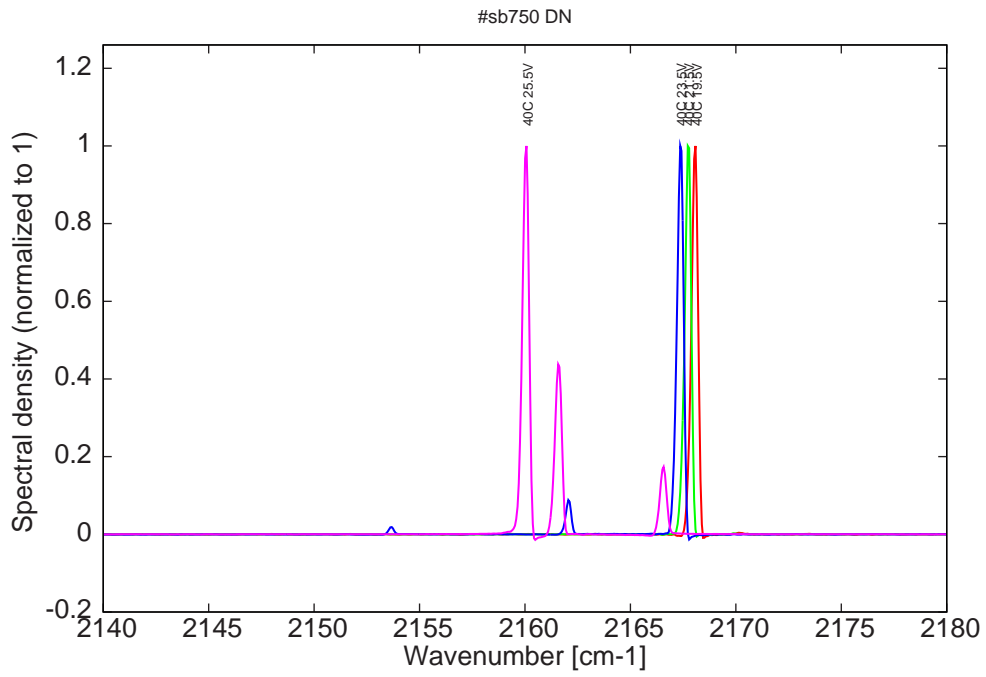


Figure 21: spectra at 40C for various LDD voltages (monomode just at threshold)

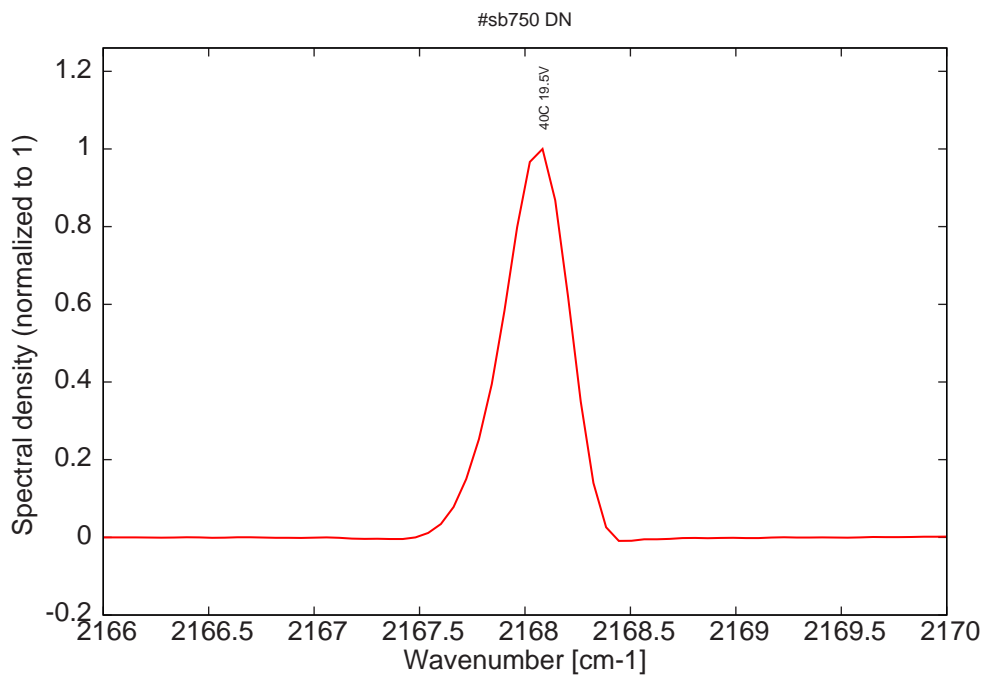


Figure 22: monomode spectrum at 40C and 19.5V on LDD

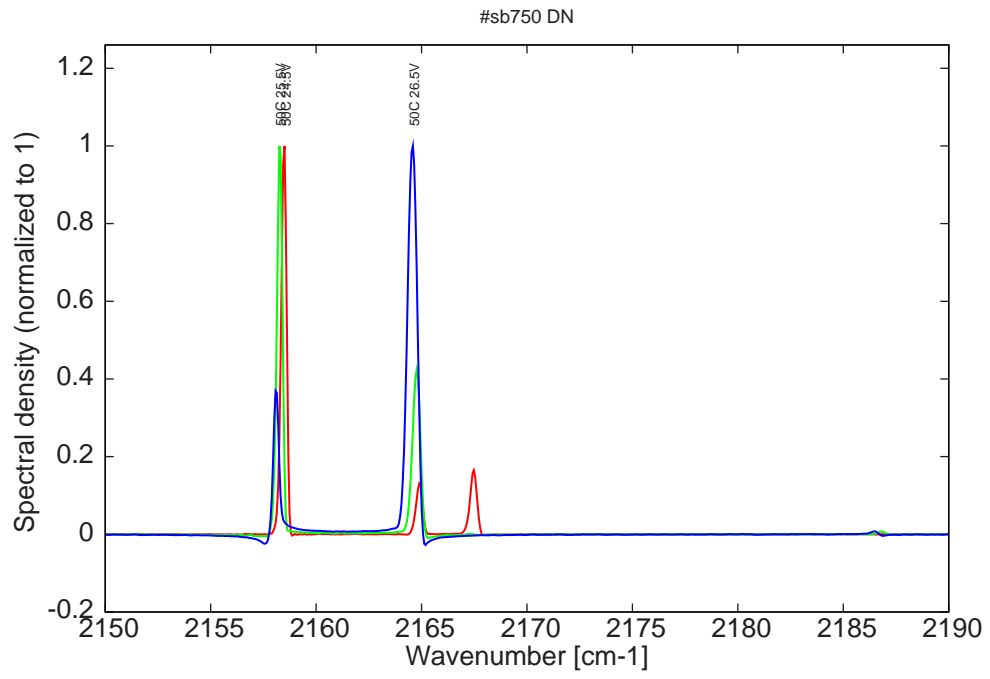


Figure 23: spectra at 50C for various LDD voltages (all multimode)